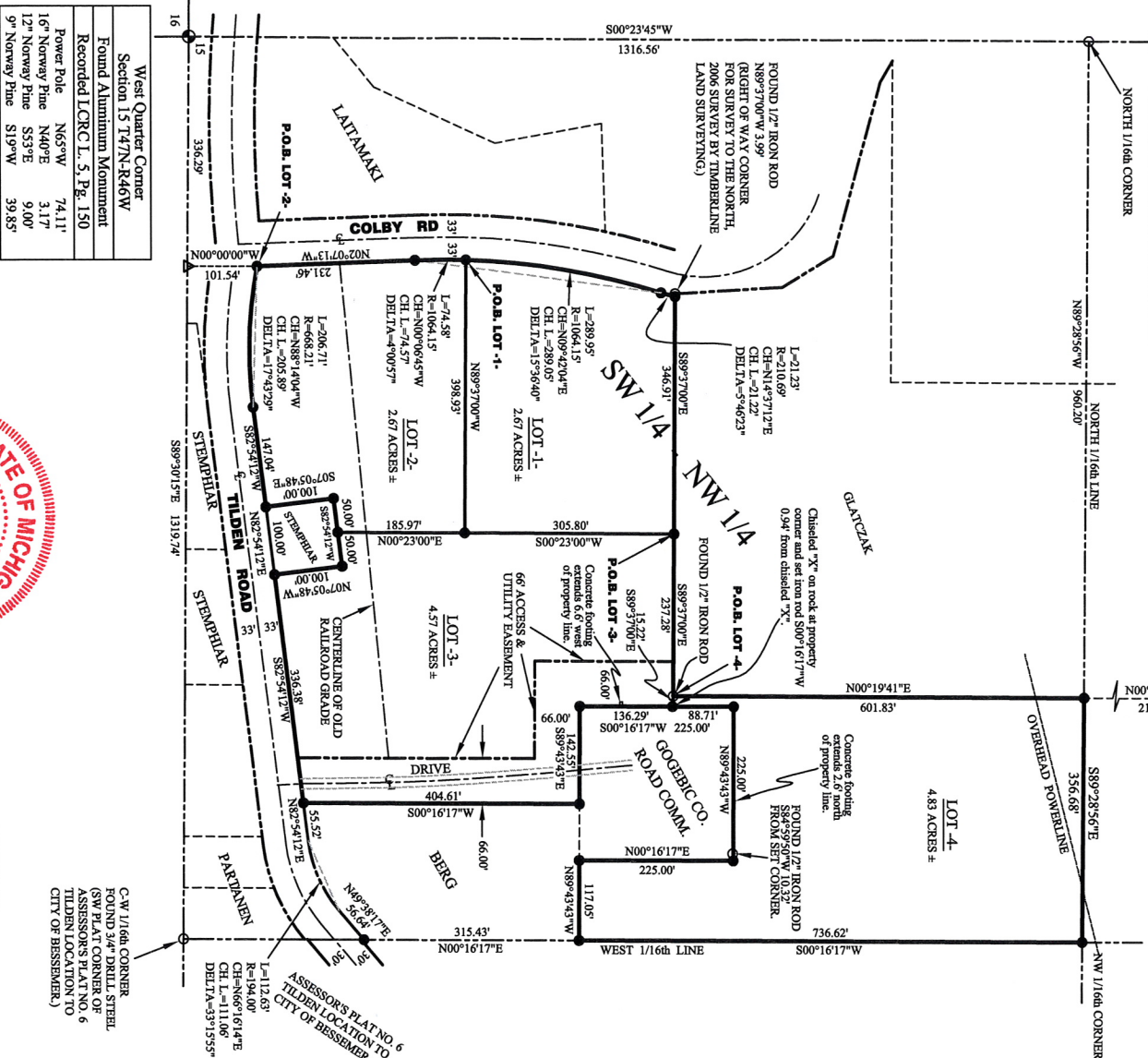
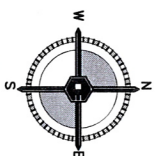


Prepared for:  
Tom Chatal, City of Bessemer  
4111 S. Sophie Street  
Bessemer, MI 48911

# CERTIFIED SURVEY MAP

Part of the SW1/4-NW1/4,  
Section 15, Township 47 North, Range 46 West,  
City of Bessemer, Gogebic County, Michigan.

Northwest Corner Section 15 T47N-R46W	
Found PK nail	
Recorded LCRC L. 5, Pg. 98	
Ref. Monument	S40°W 44.05'
Power Pole	N45°W 36.53'
Power Pole	N18°E 52.57'
Hydrant	N51°E 40.68'



## CERTIFICATE OF SURVEY

I HEREBY CERTIFY TO:  
TOM CHATEL

THAT A SURVEY ON THE PARCEL DESCRIBED HEREON WAS MADE UNDER MY RESPONSIBLE DIRECTION AND SUPERVISION. THE SURVEY COMPLES WITH THE REQUIREMENTS OF SECTION 3, ACT 132 P.A. 1970. THE ERROR OF CLOSURE IS NO GREATER THAN 1 IN 10,000.



## LEGEND

- = Set 5/8" x 18" capped iron rod.
- = Found monument as noted.
- △ = Calculated position.

Note: All dimensions are in feet.

## COLEMAN ENGINEERING COMPANY



200 East Averb Street, Ironwood, MI 49938  
Phone: (909) 922-5046 Fax: (909) 922-3213  
www.coleman-engineering.com

DATE

8-11-08

Sheet 1 of 5

© 2008 BY COLEMAN ENGINEERING COMPANY

Job Number: SI-08218

Drawn by: A. McFae

Date: 8-11-08

F.B. #432, Pg. #31

Sheet 1 of 5

© 2008 BY COLEMAN ENGINEERING COMPANY

Job Number: SI-08218